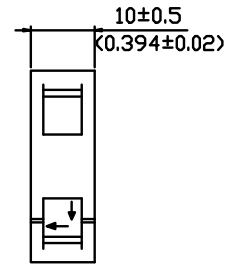
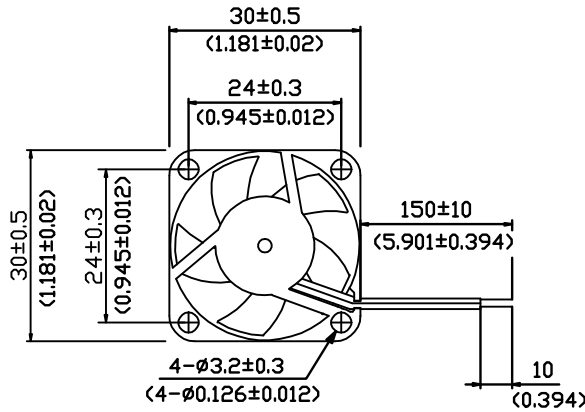




Dongguan BEST motor co., LTD

BEST 30×30×10 MM
DIMENSIONS DRAWING

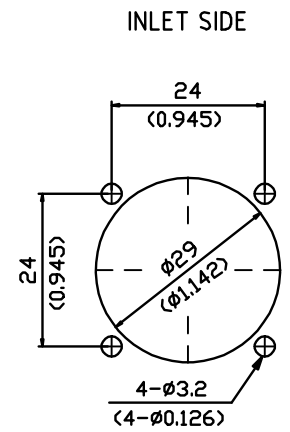
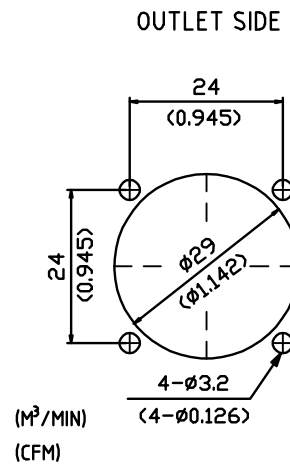
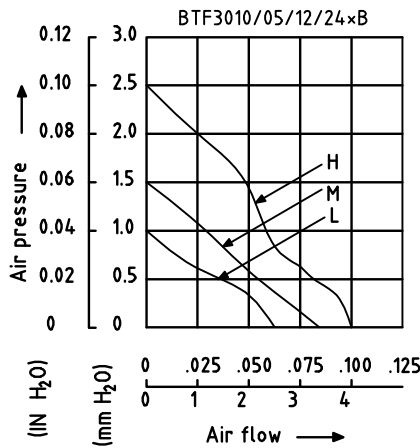


UNIT: $\frac{\text{mm}}{\text{(INCH)}}$

- ×Bearing Type
Ball Bearings
- ×Material
Impeller & Frame: Plastic(UL94V-0)
- ×Lead Wires:
UL 1061 AWG#26 OR Equivalent
Red Wire Positive(+)
Black Wire Negative(-)
- ×Weight: 10.5g(0.37 OZ)
- ×Rib Type Only

P&Q CURVE (AT RATED VOLTAGE)

MOUNTING PANEL CUTOUT



UNIT: $\frac{\text{mm}}{\text{(INCH)}}$

MODEL		Rated Voltage	Operating Voltage Range	Rated Current	Rated Input Power	Speed	Maximum Air Flow		Maximum Air Pressure		Noise
PART NO.	FUNCTION	VDC	VDC	Amp	Watt	R.P.M.	M ³ /MIN	CFM	mmH ₂ O	IN H ₂ O	dB-A
BTF3010L05B	-R00/-F00	5	4.0 TO 6.0	0.07	0.35	6000	0.067	2.37	1.00	0.040	17.5
BTF3010L12B	-R00/-F00	12	9.5 TO 13.8	0.05	0.60						
BTF3010M05B	-R00/-F00	5	4.0 TO 6.0	0.11	0.55	7500	0.085	3.00	1.50	0.060	20.0
BTF3010M12B	-R00/-F00	12	9.5 TO 13.8	0.07	0.84						
BTF3010H05B	-R00/-F00	5	4.0 TO 6.0	0.16	0.80	9000	0.100	3.53	2.50	0.100	25.0
BTF3010H12B	-R00/-F00	12	9.5 TO 13.8	0.09	1.08						
BTF3010H24B	-R00/-F00	24	18.0 TO 27.6	0.05	1.20						

- ×Function type is optional.
- ×The max. air flow and the speed are measured in free air ; max.air pressure is measured at zero air flow.
- ×Noise is measured in anechoic chamber in free air,one meter from intake side.
- ×All readings are typical values at rated voltage.
- ×Specifications are subject to change without notice.

Address: No.88 Baihua Road,Baihuadong Village ,Dalingshan Town,Dongguan,Guangdong.
 Mobile: 13823111573 13926873158
 Tel: 86-769-33217056 33217059
 FAX: 86-769-82761650
 QQ: 343315716 303294997
 E-mail: betterfan@163.com bestfan2118@163.com
 Web site: WWW.bestfan888.com