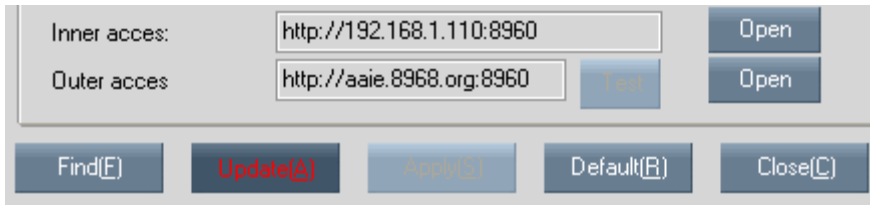


IP Camera Simple User Guide

1. Insert power cable and network line.(other connecting according to your requirements)
2. Insert the added CD in PC and install software ActiveX.msi, run the *Searcher.exe* tools, as below.

Click *Find* button to find camera IP address/domain which freely provide to you.

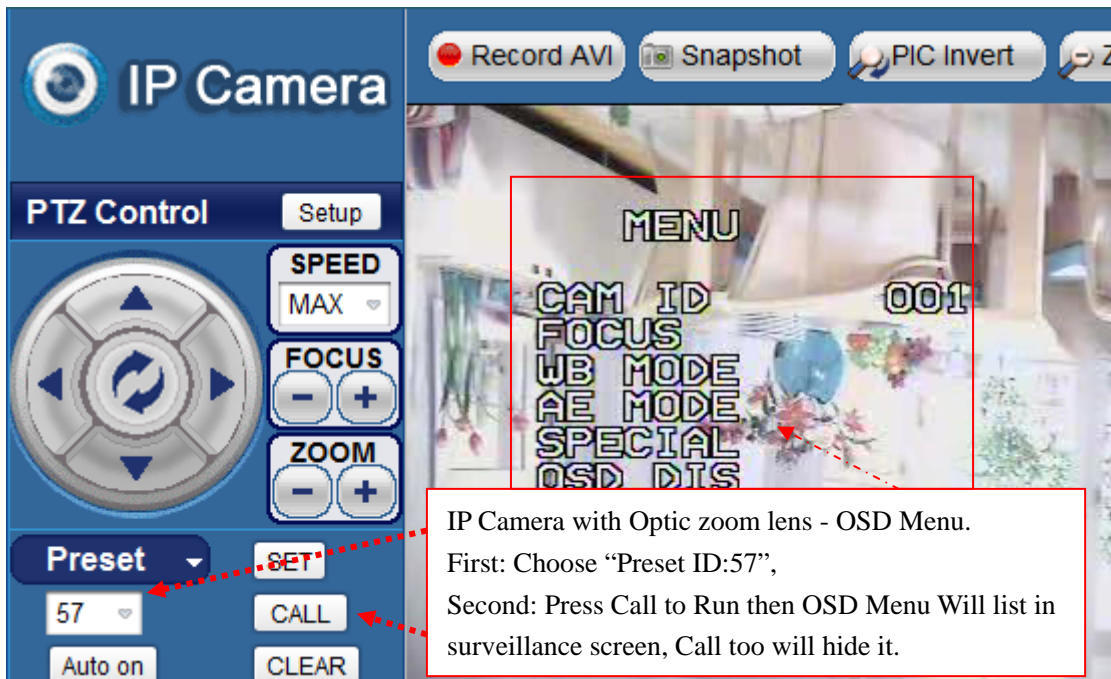


3. Click *OPEN* button to open access picture(inner access or outer access)



Note: You can change the username and password when you enter the system.

Then you can perform the monitoring in your PC. You can change the language and picture size etc.



Operation manual in menu.

Focus - button (also use Keyboard "Insert" operation) enter Sub menu or adjust the Parameters.

Focus + button (also use Keyboard "Page UP" operation) enter Sub menu or adjust the Parameters.

Zoom + button (also use Keyboard "Page Down" operation) Up select the menu.

Zoom - button (also use Keyboard "Delete" operation) Down select the menu.

Detailed Operation of IP Camera please study the Intelligent operating manual.

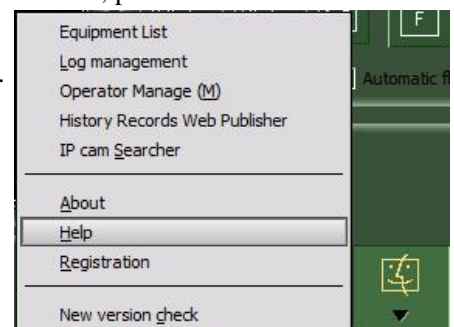
4. If you need monitor multi-cameras, you may install a centralized monitoring system software, please run the SuperIPCam.exe program and choose language which in CD,

at the right upper column, please click the right mouse button to chose follow items.

- 4.1 Add equipment and choose **M series**;

1. Name your IP camera S/N
2. Chose IP/Doman Mode
3. According to the result of Searcher Tools, input *IP/domain, port*,
4. Input account and password (both factory setting are "admin", etc.)

- 4.2 Click *Start* button to begin monitoring. (Help file click bottom-right like the pic)



Any concern or advice, please contact with your supplier, if they still can't provide enough support, you could contact factory directly, but the support is strictly limited in technology, not refer to price.

IP Camera Simple User Guide

Wireless connection method

1. First connect it via RJ45, and open the WEB server, click SETUP button you will see Basic Configuration in left, enter into WIRELESS LAN, input basic configuration and security settings, please see the following picture. If everything is ok, click **save & reset** button, Wireless IP Camera will connect with Wireless router or AP.

Wireless Settings

Basic Configuration

Operation Mode: Infra
Wireless Type: 802.11b/g mixed mode
Country Region: FCC
Channel: 10
TX Rate: Auto
SSID: linksys
Security Mode: 802.11g 54Mbps
Protect: Always Off
Channel Mode: Auto
Turbo Rate: Yes No
Short Slot: Yes No

Security Settings

Authorization Type: Shared Key
Encryption Type: WEP
Default Key ID: 1
WEP Key ID 1: Hex-10 or 26 characters 0123456789
WEP Key ID 2: Hex-10 or 26 characters
WEP Key ID 3: Hex-10 or 26 characters
WEP Key ID 4: Hex-10 or 26 characters

Buttons: Save & Reboot, Reset

2. If connection is OK, please click the left menu "STATUS", then you will see the information same as the following picture.

Status

System Information

Firmware Current Version: 6.06.30.M (Jan 21 2008 15:28:33)

Network Status

Ethernet MAC Address: 00-01-FF-FD-BF-F7
LAN IP Address: 192.168.1.118
LAN Netmask Address: 255.255.255.0
LAN Gateway Address: 192.168.1.1
DHCP State: Disabled

Camera Information

Camera Type: PAL
Total Live-View Users: 1

Wireless Status

Wireless Connection: UP
Channel: 10
Signal Level: 85%
TX Rate: 54Mbps

OCX Information

OCX Current Version: 1.18.4.41
OCX Path: C:\Program Files\ActiveX_728\IMMP4Control.ocx

3. Setup Preset position in IPCAM, run IP Camera Super-Client software.



In software click the button ADD PRESET POSITION (in the above picture) you will view "Add Preview Preset Position" window (in right picture).

Choice Special functions-> special Definition select B, in Functions select box, select No.

Final click "ok" button finishing setup, and the camera will run in your choice PRESET POSITION.

