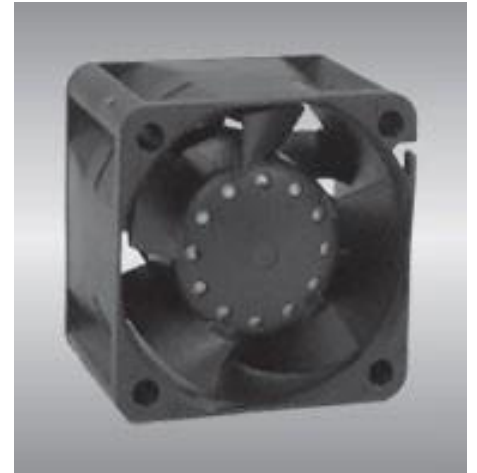


40 cooling fan ×40×28mm



General Specifications

- Motor : 6 Poles brushless DC motor
- Frame & Impeller: Plastic (UL 94V-0)
- Storage temperature : -40° to +75°
- Operating temperature : -10° to +70°

Major Characteristic Parameters

品牌	轴承	电压	启动电压	电流	功率	转速	风量	静压	噪音		
型号	B/S	V	V	A	W	RPM	m ³ /min	CFM	mm-H ₂ O	In-H ₂ O	dba
SP40B12L-28DL	B / S	12	7.0~13.2	0.18	2.16	8000	0.39	13.9	11.6	0.46	40.0
SP40B12M-28DL	B / S	12	7.0~13.2	0.26	3.12	9500	0.45	15.9	17.6	0.69	42.0
SP40B24M-28DL	B / S	24	14.0~26.4	0.15	3.60	9500	0.45	15.9	17.6	0.69	42.0
SP40B12H-28DL	B / S	12	7.0~13.2	0.35	4.20	11000	0.53	18.7	23.4	0.92	48.0
SP40B24H-28DL	B / S	24	14.0~26.4	0.20	4.80	11000	0.53	18.7	23.4	0.92	48.0
SP40B12U-28DL	B / S	12	7.0~13.2	0.55	6.60	13000	0.67	23.8	33.7	1.32	54.0
SP40B24U-28DL	B / S	24	14.0~26.4	0.27	6.48	13000	0.67	23.8	33.7	1.32	54.0
SP40B12HU-28DL	B / S	12	7.0~13.2	0.70	8.40	15000	0.70	24.8	41.6	1.64	58.0

*Bearing system B: Two Ball Bearing S: Sleeve Bearing

