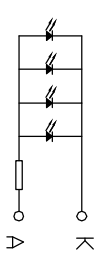


PIN	1	2	3	4	5	6	7	8	9	10	11	12	13	14	15	16	17	18	19	20	21	22	23	24	25	26
NAME	CS1	RES	A0	WR	RD	D0	D1	D2	D3	D4	D5	D6	D7	VDD	VSS	VOUT	CAP3+	CAP1-	CAP1+	CAP2+	CAP2-	V1	V2	V3	V4	V0

Specification:

- 1). Driving: Duty: 1/65, Bias: 1/9, Vop: 8.3V
- 2). Viewing angle: 6 0'clock
- 3). Display mode: STN/Blue/Negative/Transmissive
- 4). Operating temp.: -20°C~+70°C
Storage temp.: -30°C~+80°C
- 5). IC: ST7565R
- 6). Backlight: LED White



LED CIRCUIT DIAGRAM

Dwg Title		TG12864-61C	
Dwg No.			
Scale	Unit	Tol.	Date
	mm	±0.2	2011-2-25
Drawn	Checked	Approved	
HY			