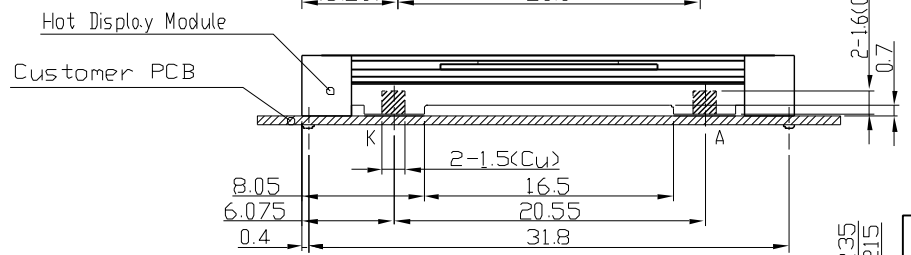
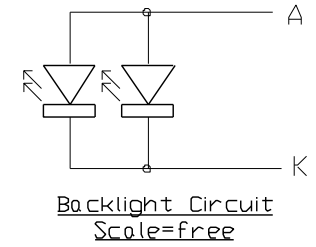
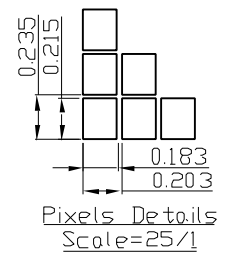
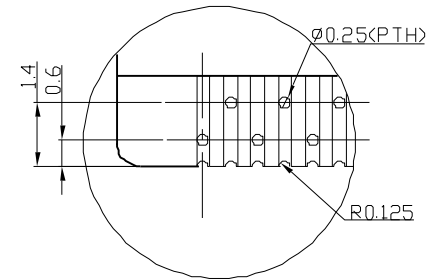
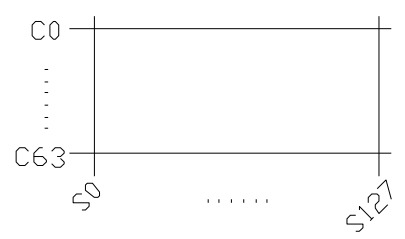
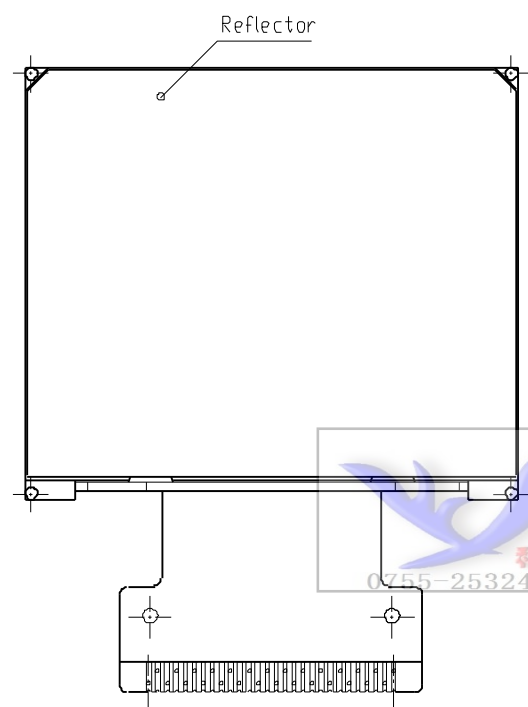
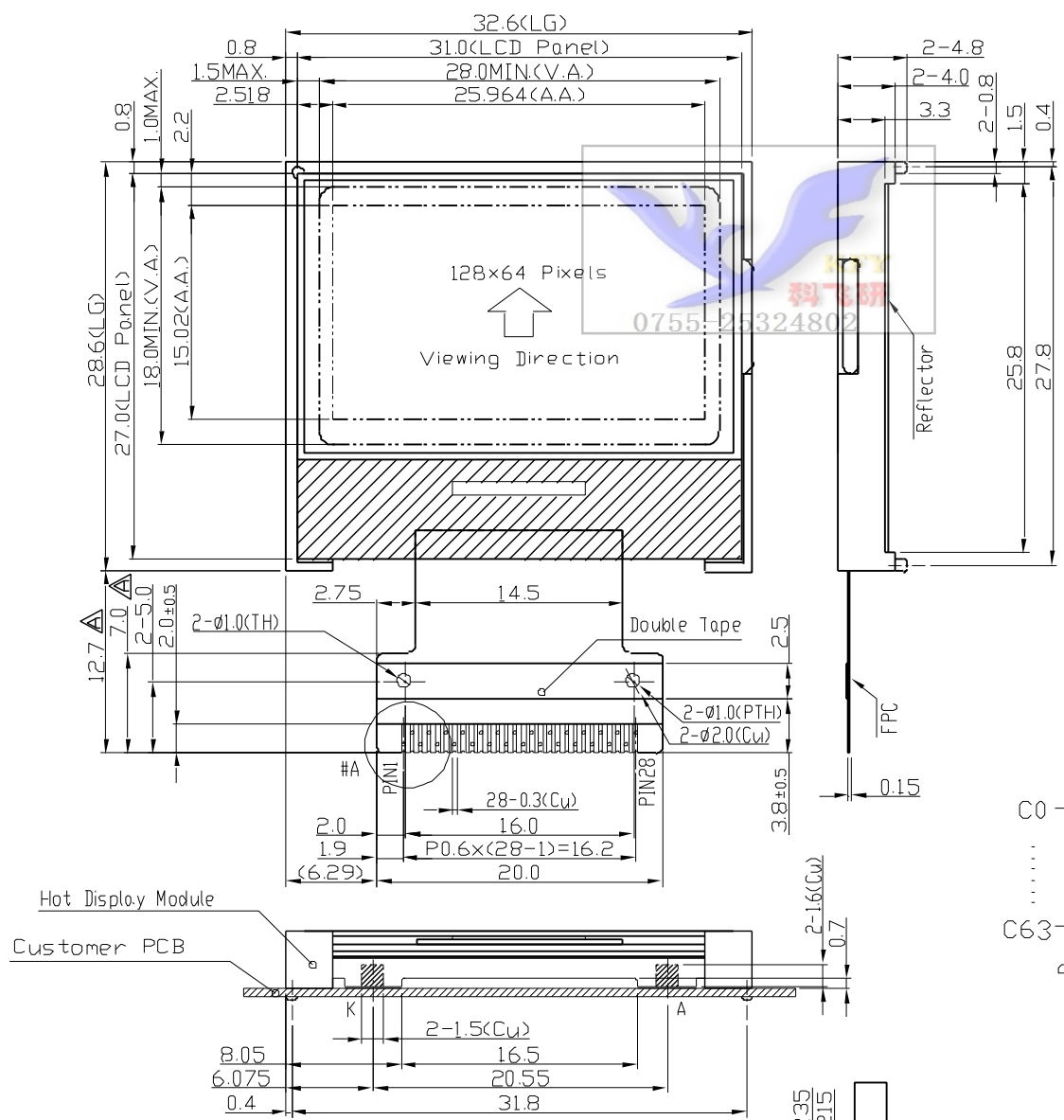


Terminal No.	Pin Name
1	VDD
2	C86
3	VSS
4	V0
5	V1
6	V2
7	V3
8	V4
9	CAP2-
10	CAP2+
11	CAP1+
12	CAP1-
13	CAP3+
14	VOUT
15	VSS
16	DB7
17	DB6
18	DB5
19	DB4
20	DB3
21	DB2
22	DB1
23	DB0
24	/RD
25	/WR
26	A0
27	/RES
28	/CS1



Note:

- *1 LCD Display Type : STN-YG, Positive, Transflective
- *2 Viewing Direction : 6H
- *3 Duty : 1/64; Bias : 1/9
- *4 Operating Voltage : 3.0V
- *6 Operating Temperature : -10°C~60°C
- *7 Storage Temperature : -20°C~70°C
- *8 Control/Drive IC : ST7565P
- *9 Backlight : Green LED(3.0V)

TEL : 0755-25324802 FAX : 0755-36808262			
Dwg Title COG12864D-1			
Dwg No. 060057-0		Date 2006-10-25	
Scale 1/1	Unit mm	Tol. ±0.5	
Rev. A	-Revise FPC Outline	Jack 2006-12-06	Drawn JACK
Checked		Approved	