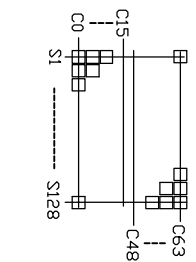
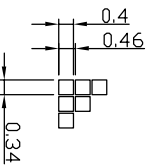
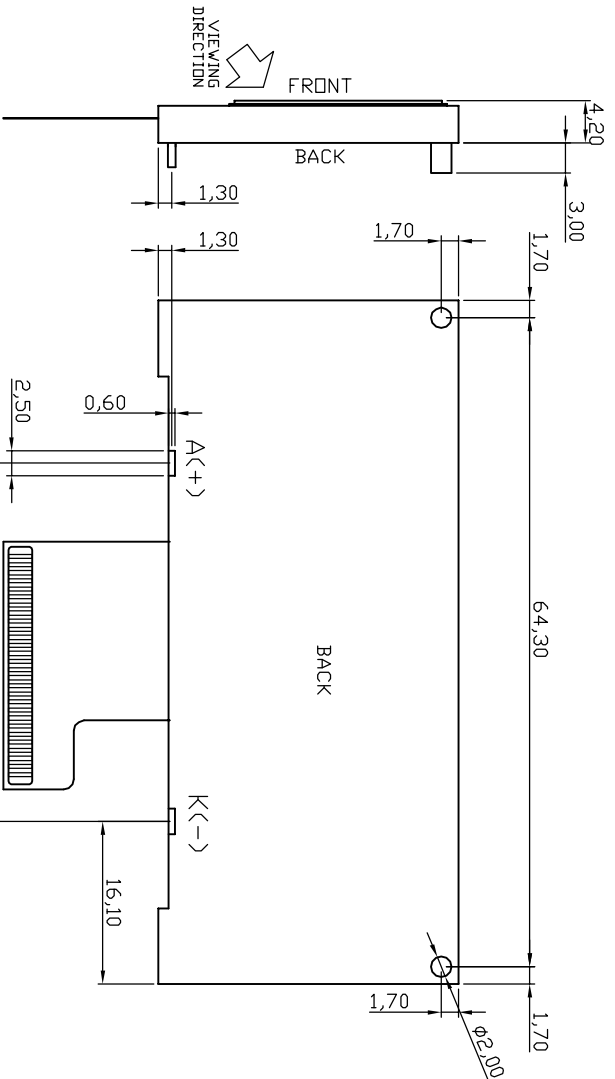
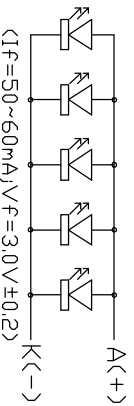


- Specifications:
- 1) LCD Display Type : FSTN,Positive,
 - 2) Polarizer : Transflective
 - 3) Viewing Direction : 6 O'Clock
 - 4) Drive Method : 1/32Duty; 1/6Bias
 - 5) Operating Voltage : VDD=3.3V
 - 6) Operating Temperature : -20°C~70°C
 - 7) Storage Temperature : -30°C~80°C
 - 8) Controller/Driver IC : ST7565



No.	Name	No.	Name
1	VDD	15	VSS
2	PS	16	D7
3	C86	17	D6
4	V0	18	D5
5	V1	19	D4
6	V2	20	D3
7	V3	21	D2
8	V4	22	D1
9	C2-	23	D0
10	C2+	24	RD
11	C1+	25	WR
12	C1-	26	A0
13	C3+	27	/RES
14	VDUT	28	/CS1

Customers Approval With Signature And Chop

Approved By

Date

Dwg Title
T12832C006B (BL2)

REV
01

Scale Unit Tol. Dwg No.

mm ±0.2 06281530

Drawn Lmx Checked Approved Date

2012-06-28