



## TSYS01

### Digital Temperature Sensor

#### SPECIFICATIONS

- **High Accuracy Temperature Sensor**
- **16/24 bit Resolution**
- **Low Power**
- **SPI/I2C Interface**
- **QFN16 Package**

The TSYS01 is a single chip, versatile, new technology temperature sensor. The TSYS01 provides factory calibrated temperature information. It includes a temperature sensing chip and a 24 bit  $\Delta\Sigma$ -ADC. The essence of the digital 24 bit temperature value and the internal factory set calibration values lead to highly accurate temperature information accompanied by high measurement resolution.

The TSYS01 can be interfaced to any microcontroller by an I<sup>2</sup>C or SPI interface. This microcontroller has to calculate the temperature result based on the ADC values and the calibration parameters.

The basic working principle is:

- Converting temperature into digital 16/24 bit ADC value
- Providing calibration coefficients
- Providing ADC value and calibration coefficients by SPI or I2C interface.

## FEATURES

- High Accuracy  $\pm 0.1^{\circ}\text{C}$  @ Temp.:  $-5^{\circ}\text{C} \dots +50^{\circ}\text{C}$
- Adjustment of high accuracy temp. range on request
- Low Current,  $< 12.5 \mu\text{A}$  (standby  $< 0.14 \mu\text{A}$ )
- SPI / I<sup>2</sup>C Interface
- Small Package: QFN16
- Operating Temperature Range:  $-40^{\circ}\text{C} \dots +125^{\circ}\text{C}$

## APPLICATIONS

- Industrial Control
- Replacement of Thermistors and NTCs
- Heating / Cooling Systems
- HVAC

## ABSOLUTE MAXIMUM RATINGS

Absolute maximum ratings are limiting values of permitted operation and should never be exceeded under the worst possible conditions either initially or consequently. If exceeded by even the smallest amount, instantaneous catastrophic failure can occur. And even if the device continues to operate satisfactorily, its life may be considerably shortened.

Parameter	Symbol	Conditions	Min	Typ	Max	Unit
Supply Voltage	V <sub>DD</sub>		-0.3		+3.6	V
Operating Temperature	T <sub>op</sub>		-40		+125	°C
Storage temperature	T <sub>stor</sub>		-55		+150	°C
ESD rating	ESD	Human Body Model (HBM) pin to pin incl. V <sub>DD</sub> & GND	-4		+4	kV
Humidity	Hum		Non condensing			

## OPERATING CONDITIONS

Parameter	Symbol	Conditions	Min	Typ	Max	Unit
Operating Supply Voltage	V <sub>DD</sub>	stabilized	2.2		3.6	V
High Accuracy Supply Voltage	V <sub>DD</sub>	To achieve Acc1	3.2		3.4	V
Supply Current	I <sub>DD</sub>	1 sample per second			12.5	μA
Standby current	I <sub>S</sub>	No conversion, V <sub>DD</sub> = 3V T = 25°C T = 85°C		0.02	0.14	μA
				0.70	1.40	μA
Peak Supply Current	I <sub>DD</sub>	During conversion		1.4		mA
Conversion time	T <sub>CONV</sub>		7.40	8.22	9.04	ms
Serial Data Clock SPI	F <sub>SCLK</sub>				20	MHz
Serial Data Clock I <sup>2</sup> C	F <sub>SCL</sub>				400	kHz
V <sub>DD</sub> Capacitor		Place close to the chip	100nF			

**OPERATIONAL CHARACTERISTICS**

If not otherwise noted, 3.3V supply voltage is applied.

Parameter	Symbol	Conditions	Min	Typ	Max	Unit
Temp. Measurement Range	T <sub>RANG</sub>		-40		125	°C
Accuracy 1	T <sub>ACC1</sub>	-5°C < T < +50°C V <sub>DD</sub> = 3.2V – 3.4V	-0.1		+0.1	°C
Accuracy 2	T <sub>ACC2</sub>	-40°C < T < +125°C V <sub>DD</sub> = 3.2V – 3.4V	-0.5		+0.5	°C
Power Supply Reject Ratio	PSRR	V <sub>DD</sub> = 2.7 – 3.6 T = 25°C, C = 100nF			0.2	°C
Temperature Resolution	T <sub>RES</sub>				0.01	°C
Time Constant	T <sub>liquid</sub>	t <sub>63</sub> (t <sub>1</sub> → t <sub>2</sub> ) t <sub>1</sub> = 25°C (air 0m/s) t <sub>2</sub> = 75°C (liquid) PCB 900mm <sup>2</sup> x 1.5mm FR4		3		s
	T <sub>air</sub>	t <sub>63</sub> (t <sub>1</sub> → t <sub>2</sub> ) t <sub>1</sub> = 25°C (air 0m/s) t <sub>2</sub> = 75°C (air stream 60m/s) PCB 900mm <sup>2</sup> x 1.5mm FR4		4		s
Self Heating	SH <sub>1</sub>	10 samples/s, 60s, still air			0.02	°C

**ANALOGUE TO DIGITAL CONVERTER**

Parameter	Symbol	Conditions	Min	Typ	Max	Unit
Output Word				24		bit
Conversion Time	t <sub>c</sub>		7.40	8.22	9.04	ms

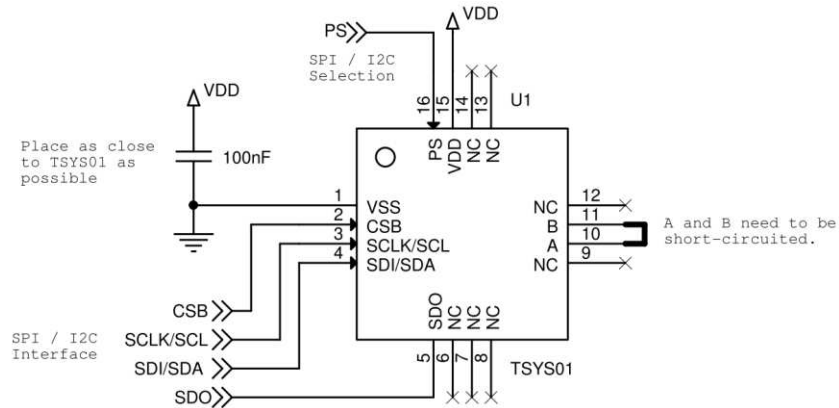
**DIGITAL INPUTS (SCLK, SDI, CSB, PS)**

Parameter	Symbol	Conditions	Min	Typ	Max	Unit
Input High Voltage	V <sub>IH</sub>	V <sub>DD</sub> = 2.2...3.6V	0.7 V <sub>DD</sub>		V <sub>DD</sub>	V
Input Low Voltage	V <sub>IL</sub>	V <sub>DD</sub> = 2.2...3.6V	0.0 V <sub>DD</sub>		0.3 V <sub>DD</sub>	V
CS low to first SCLK rising	t <sub>CSL</sub>		21			ns
CS high to first SCLK rising	t <sub>CSH</sub>		21			ns
SDI setup to first SCLK rising	T <sub>D<sub>SO</sub></sub>		6			ns
SDI hold to first SCLK rising	T <sub>D<sub>O</sub></sub>		6			ns

**DIGITAL OUTPUTS (SDA, SDO)**

Parameter	Symbol	Conditions	Min	Typ	Max	Unit
Output High Voltage	V <sub>OH</sub>	I <sub>Source</sub> = 1mA	0.8 V <sub>DD</sub>		V <sub>DD</sub>	V
Output Low Voltage	V <sub>OL</sub>	I <sub>Sink</sub> = 1mA	0.0 V <sub>DD</sub>		0.2 V <sub>DD</sub>	V
SDO setup to first SCLK rising	t <sub>QS</sub>		10			ns
SDO hold to first SCLK rising	t <sub>QH</sub>		0			ns

**CONNECTION DIAGRAM**



**PIN FUNCTION TABLE**

Pin	Name	Type	Function
1	VSS	G	Ground
2	CSB	DI	SPI: Chip Select (active low) I <sup>2</sup> C: Address Selection
3	SCLK/SCL	DI	SPI: Serial Data Clock I <sup>2</sup> C: Serial Data Clock
4	SDI/SDA	DIO	SPI: Serial Data Input I <sup>2</sup> C: Data Input / Output
5	SDO	DO	SPI: Serial Data Output
6 – 9	NC	---	Not connected / Do not connect
10	A	I	Connect Pin10 with Pin11
11	B	I	Connect Pin11 with Pin10
12 – 14	NC	---	Not connected / Do not connect
15	VDD	P	Supply Voltage
16	PS	DI	Communication protocol select (0=SPI, 1=I <sup>2</sup> C)
---	DAP	---	Die Attach Pad, suggested to connect to VSS

## INTERFACE DESCRIPTION

### PROTOCOL SELECTION

PS pin input level has to be defined in dependence to protocol selection.

- PS = 0 activates SPI.
- PS = 1 activates I<sup>2</sup>C.

### I<sup>2</sup>C INTERFACE

A I<sup>2</sup>C communication message starts with a start condition and it is ended by a stop condition. Each command consists of two bytes: the address byte and command byte.

### I<sup>2</sup>C ADDRESS SELECTION

The I<sup>2</sup>C address can be selected by CSB pin.

- CSB=1 then the address is 1110110x.
- CSB=0 the address is 1110111x.

Therefore, two TSYS01 can be interfaced on the same I<sup>2</sup>C bus.

### SPI INTERFACE

The serial interface is a 4-wire SPI bus, operating as a slave. CS (chip select), SCLK (serial clock), SDI (serial data in), and SDO (serial data out) are used to interact with the SPI master.

Communication with the chip starts when CS is pulled to low and ends when CS is pulled to high.

SCLK is controlled by the SPI master and idles low (SCLK low on CS transitions, mode 0).

A mode where the clock alternatively idles high is also supported (mode 3).

### COMMANDS

The commands are the same for SPI and I<sup>2</sup>C interface.

There are four commands:

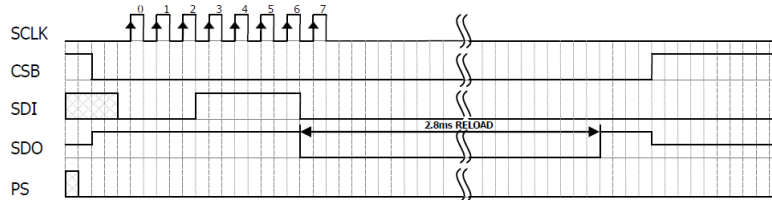
- Reset
- Read PROM (calibration parameters)
- Start ADC Temperature conversion
- Read ADC Temperature result

Command	Hex Value
Reset	0x1E
Start ADC Temperature Conversion	0x48
Read ADC Temperature Result	0x00
PROM Read Address 0	0xA0
PROM Read Address 1	0xA2
PROM Read Address 2	0xA4
PROM Read Address 3	0xA6
PROM Read Address 4	0xA8
PROM Read Address 5	0xAA
PROM Read Address 6	0xAC
PROM Read Address 7	0xAE

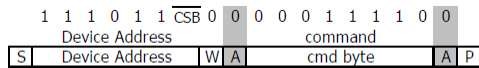
**RESET SEQUENCE**

The Reset sequence has to be sent once after power-on. It can be also used to reset the device ROM from an unknown condition.

**SPI**



**I<sup>2</sup>C**



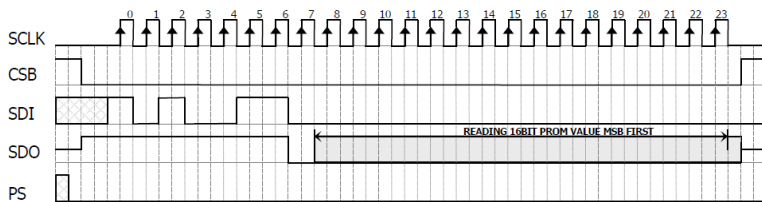
From Master      S = Start Condition      W = Write      A = Acknowledge  
 From Slave      P = Stop Condition      R = Read      N = Not Acknowledge

**PROM READ SEQUENCE**

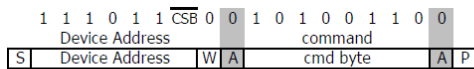
The PROM Read command consists of two parts. First command sets up the system into PROM read mode. The second part gets the data from the system.

Below examples are sequences to read address 3 (command 0xA6).

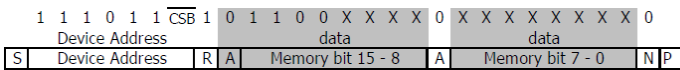
**SPI**



**I<sup>2</sup>C**



From Master      S = Start Condition      W = Write      A = Acknowledge  
 From Slave      P = Stop Condition      R = Read      N = Not Acknowledge



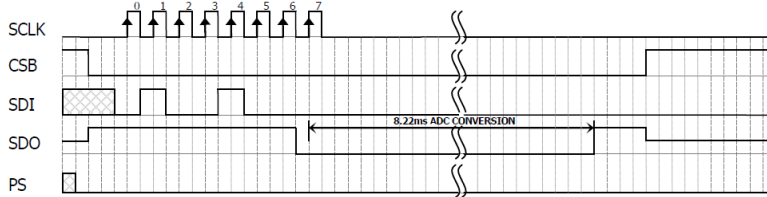
From Master      S = Start Condition      W = Write      A = Acknowledge  
 From Slave      P = Stop Condition      R = Read      N = Not Acknowledge

**CONVERSION SEQUENCE**

A conversion has to be started by sending this command. The sensor stays busy until conversion is done. When conversion is finished the data can be accessed by using ADC read command

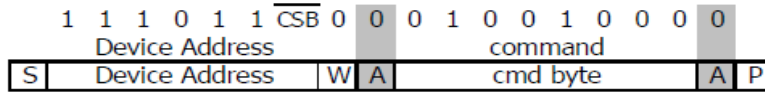
**SPI**

The last clock will start the conversion which TSYS01 indicates by pulling SDO low. SDO goes high when conversion is completed.



**I<sup>2</sup>C**

When the command is sent the TSYS01 stays busy until the conversion is done. All other commands except the reset command will not be executed during this time. When the conversion is finished the data can be accessed by sending a ADC read command, when an acknowledge appears from TSYS01.

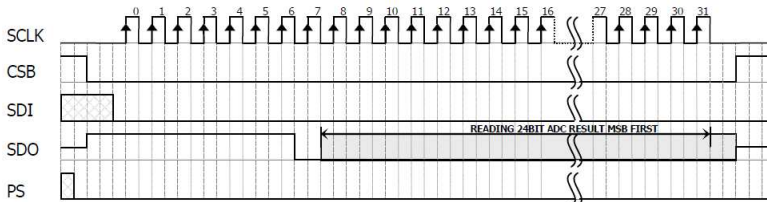


□	From Master	S	= Start Condition	W	= Write	A	= Acknowledge
■	From Slave	P	= Stop Condition	R	= Read	N	= Not Acknowledge

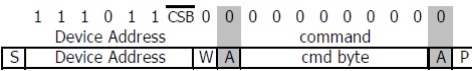
**READ ADC RESULT**

After the conversion command the ADC result is read using ADC read command. Repeated ADC read commands, or command executed without prior conversion will return all 0 as result.

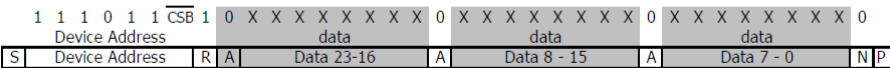
**SPI**



**I<sup>2</sup>C**

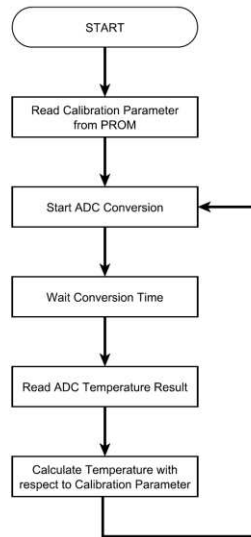


□	From Master	S	= Start Condition	W	= Write	A	= Acknowledge
■	From Slave	P	= Stop Condition	R	= Read	N	= Not Acknowledge



□	From Master	S	= Start Condition	W	= Write	A	= Acknowledge
■	From Slave	P	= Stop Condition	R	= Read	N	= Not Acknowledge

## TEMPERATURE CALCULATION



### CALIBRATION PARAMETER

Variable	Description	Command	Size / bit	Min	Max	Example
k <sub>4</sub>	Coefficient k <sub>4</sub> of polynomial	0xA2	16	0	65535	28446
k <sub>3</sub>	Coefficient k <sub>3</sub> of polynomial	0xA4	16	0	65535	24926
k <sub>2</sub>	Coefficient k <sub>2</sub> of polynomial	0xA6	16	0	65535	36016
k <sub>1</sub>	Coefficient k <sub>1</sub> of polynomial	0xA8	16	0	65535	32791
k <sub>0</sub>	Coefficient k <sub>0</sub> of polynomial	0xAA	16	0	65535	40781

### TEMPERATURE POLYNOMIAL

ADC24: ADC value

ADC16: ADC24 / 256

$$T / ^\circ\text{C} = (-2) * k_4 * 10^{-21} * \text{ADC16}^4 + 4 * k_3 * 10^{-16} * \text{ADC16}^3 + (-2) * k_2 * 10^{-11} * \text{ADC16}^2 + 1 * k_1 * 10^{-6} * \text{ADC16} + (-1.5) * k_0 * 10^{-2}$$

### EXAMPLE

ADC24: 9378708

ADC16: 9378708 / 256 = 36636

$$T / ^\circ\text{C} = (-2) * 28446 * 10^{-21} * 36636^4 + 4 * 24926 * 10^{-16} * 36636^3 + (-2) * 36016 * 10^{-11} * 36636^2 + 1 * 32791 * 10^{-6} * 36636 + (-1.5) * 40781 * 10^{-2}$$

**T / °C = 10.59**

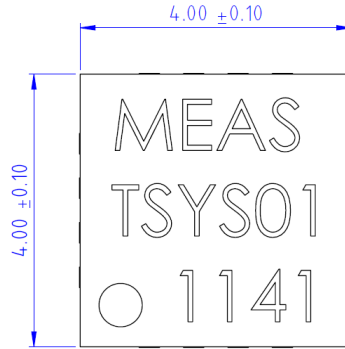


# TSYS01

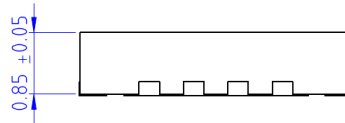
Digital Temperature Sensor

## DIMENSIONS

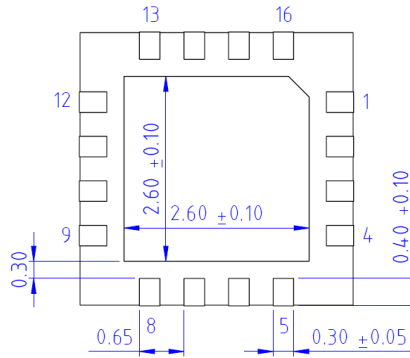
### TOP VIEW



### SIDE VIEW



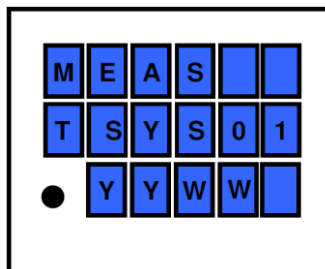
### BOTTOM VIEW



Die Attach Pad, suggested to connect to VSS

## MARKING

Line	Description	Example
1	Manufacturer	MEAS
2	Product Name	TSYS01
3	Pin 1 Dot, Date Code YYWW	1141



## ORDER INFORMATION

Please order this product using following:

Part Number

G-NICO-018

Part Description

TSYS01 Digital Temperature Sensor

## EMC

Due to the use of these modules for OEM application no CE declaration is done.

Especially line coupled disturbances like surge, burst, HF etc. cannot be removed by the module due to the small board area and low price feature. There is no protection circuit against reverse polarity or over voltage implemented.

The module will be designed using capacitors for blocking and ground plane areas in order to prevent wireless coupled disturbances as good as possible.

## DEFINITIONS AND DISCLAIMERS

- Application information – Applications that are described herein for any of these products are for illustrative purpose only. MEAS Deutschland GmbH makes no representation or warranty that such applications will be suitable for the specified use without further testing or modification.
- Life support applications – These products are not designed for use in life support appliances, devices, or systems where malfunctions of these products can reasonably be expected to result in personal injury. MEAS Deutschland GmbH customers using or selling this product for use in such applications do so at their own risk and agree to fully indemnify MEAS Deutschland GmbH for any damages resulting from such improper use or sale

### NORTH AMERICA

Measurement Specialties, Inc.,  
a TE Connectivity Company  
910 Turnpike Road  
Shrewsbury, MA 01545  
Tel: 1-508-842-0516  
Fax: 1-508-842-0342  
Sales email:  
temperature.sales.amer@meas-spec.com

### EUROPE

Measurement Specialties (Europe), Ltd.,  
a TE Connectivity Company  
Deutschland GmbH  
Hauert 13  
44277 Dortmund  
Tel: +49 (0) 231/9740-0  
Fax: +49 (0) 231/9740-20  
Sales email:  
info.de@meas-spec.com

### ASIA

Measurement Specialties (China), Ltd.,  
a TE Connectivity Company  
No. 26 Langshan Road  
Shenzhen High-Tech Park (North)  
Nanshan District, Shenzhen 518057  
China  
Tel: +86 755 3330 5088  
Fax: +86 755 3330 5099  
Sales: temperature.sales.asia@meas-spec.com

### [TE.com/sensorsolutions](http://TE.com/sensorsolutions)

Measurement Specialties, Inc., a TE Connectivity company.

Measurement Specialties, TE Connectivity, TE Connectivity (logo) and EVERY CONNECTION COUNTS are trademarks. All other logos, products and/or company names referred to herein might be trademarks of their respective owners.

The information given herein, including drawings, illustrations and schematics which are intended for illustration purposes only, is believed to be reliable. However, TE Connectivity makes no warranties as to its accuracy or completeness and disclaims any liability in connection with its use. TE Connectivity's obligations shall only be as set forth in TE Connectivity's Standard Terms and Conditions of Sale for this product and in no case will TE Connectivity be liable for any incidental, indirect or consequential damages arising out of the sale, resale, use or misuse of the product. Users of TE Connectivity products should make their own evaluation to determine the suitability of each such product for the specific application.

© 2015 TE Connectivity Ltd. family of companies All Rights Reserved.